

**Jobsite Safety Summary Report
For July 2015
San Diego Central Courthouse**

R&S Job #: 10174600
Site Workforce: 344-440

Date of Inspection: July 2., 8, 16, 22, 29, & 31.
Inspected by: Jose L. Reyes

477
Days Worked

35
Days Worked
Without Injury

0
Lost Time
Injuries

9
Doctor cases



SUCCESSES!

- ◆ For the amount of tradespeople on site, PPE is great! Hard hats, safety glasses, face shields, welding hoods, ear protection, respirators, class two vests/shirts, foot protection, hand protection, & fall arrest equipment are all being used properly.
- ◆ Various pre-tasks are conducted on a daily basis to include crane activity, hoisting of equipment, welding, torch cutting & burning, fall protection, concrete placement, concrete pump, forklift rigging, forklift material handling, pressurized piping, & scaffold erection.
- ◆ As always, awesome fall arrest systems in place & properly used. Especially Herrick connectors, bolt up crew, plumb up crew, safety rail crew, & welders. Also Morley, UMEC, Clark Pacific, Anning Johnson, & Surf City Steel.
- ◆ The jobsite is extremely clean & organized. Great job to the R&S laborers assisting with the housekeeping throughout the site to include interiors & exteriors.
- ◆ There have been three successful crane jumps for all three Luffing cranes & three successful jumps for all four personnel hoists.
- ◆ Rigging practices observed were done in accordance with safe rigging practices, great job to all involved.





Jobsite Safety Summary Report For July 2015 San Diego Central Courthouse



ISSUES/FINDINGS

- ◆ Stairway #1 at level 11-12 had planks going across the stairs obstructing access/egress, notified Herrick & corrected the issue.
- ◆ UMEC had two employees working off the mid rails of their scissor lifts, corrected immediately.
- ◆ Level 15 & 14 Herrick nor R&S did not have emergency fire extinguishers posted, corrected immediately.

PREPLANNING

- ◆ Jump man lifts 1-2 (18th-19th fl.), jump man lifts 3-4 (18th-19th fl.), jump man lifts 1-2 (20th-21st fl.). Tower crane jumps-jump tower crane 3 (LVL 19 & 20 tie in 15th fl.), jump tower crane 1 (LVL 19 & 20 tie in 15th fl.), jump tower crane 2 (LVL 21 & 22 tie in 17th fl.). Structural Steel– LVL 17,18, 19, & 20– shake out , bolt up, plumb/align. Concrete decks level 12,13,14, & 15. Lower level basements-mechanical, electrical, plumbing, & CMU. Level 1-11 interior framing, mechanical, plumbing, & fireproofing.



ADDITIONAL

- ◆ Jobsite safety meeting are held every Tuesday morning at 7am, topics were unsafe acts, guardrails, handrails, & covers, falling objects, & cell phones. Up-coming & on going work activities were also discussed. Great job to the SDCC JSC’s for putting together a skit during their safety meeting as a way to get more interaction from the jobsite.
- ◆ Various training were also conducted on site such as scissor lift training with United Rentals, confined space awareness with Alliant, & respiratory fit testing by 1st Aid Responders.

Report Prepared by: ◆ A jobsite BBQ was held on July 2nd as a “thank you” for all the hard work & dedication to all involved in the project.

Jose Reyes

Rudolph and Sletten, Inc.

Regional Safety Coordinator

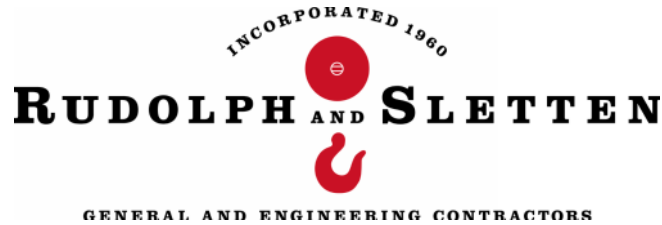
(714) 470-6332

Jose_Reyes@rsconst.com



“With the amount of hours worked, I have the highest accolades for our safety teams & tradespeople, especially R&S & Herrick.”

Bob Boyles, Senior Superintendent



Jobsite Safety Summary For July 2015

Gilead La Verne Greenfield

R&S Job #: 10448600

Site Workforce: 65-126

Dates of inspections July 6, 13, 14, 15, 17, 21, & 28.

139

Days Worked

59

Days Worked
Without Injury

0

Lost Time
Injuries

1

Doctor Cases



SUCCESSES!

- ◆ Out of all my visits for the month of July there only had to be one reminder to one employee to wear his safety glasses, awesome job team!
- ◆ Concrete placement, concrete pump, excavation/trenching, pressurized pipe, crane activity, heat illness /high heat illness, & torch cutting, welding, & burning pre-tasks have been conducted with R&S, Klorman, Morrow Meadows, RJ & J, Murray Company, Mr. Crane, Herrick, & Anning Johnson.
- ◆ Great job to all on their fall arrest systems in place & being properly used especially Mr. Crane erectors & Herrick connectors. Even witnessed Mr. Crane erectors actually shake out & thoroughly inspect their full body harnesses prior to commencing work.
- ◆ The jobsite looks very clean, well maintained, & organized. R&S field crews leading by example by helping with the housekeeping.
- ◆ Excavations/trenches were properly benched, sloped or shored.
- ◆ Plenty of potable water & shade available in the work areas for employees.
- ◆ Great rigging practices observed by Herrick especially when multiple rigging.





Jobsite Safety Monthly Report For July 2015

Gilead La Verne Greenfield



ISSUES/FINDINGS

- ◆ Two Klorman carpenters using an extension ladder that was not secured & was not 3' past the landing, both issues corrected immediately.
- ◆ Two Morrow Meadows electricians inside a trench without a ladder twice, both times corrected immediately & reported to their foreman. Disciplined by Morrow Meadows.
- ◆ Need better flagging/signage around excavations/trenches especially those that are over 6' or greater in depth. Corrected by Murray Company & R&S.

PREPLANNING

- ◆ Test/inspection UG gas line, backfill new UG gas line from new MSA to bldg. 20, backfill telecom, backfill elevator pit walls, rework trenches for FRP piping installation, complete FRP/fuseal piping installation/ test I inspections, SOG L10-excavate thickened edge SOG, form perimeters SOG, welding structures roof connections, metal decking L10, metal stairs L10, L20 welding structure roof, SOG L30 place SOG.

ADDITIONAL

- ◆ Jobsite safety meetings are held every Monday morning at 7am & include topics such as hearing protection, housekeeping, falls, slips, trips, heat illness, & fall protection. Ongoing & upcoming work activities were also discussed.
- SIP orientation are held every morning for new employees to the site.
- A thank you BBQ was held on July 2nd as an appreciation to all involved for the first 100 days of work.
- A 330 ton crawler crane provided by Mr. Crane is on site erecting structural steel for Herrick & Anning Johnson.



Report Prepared by:

Jose L. Reyes
Rudolph and Sletten, Inc.
Regional Safety Coordinator
(714) 470-6332
Jose_Reyes@rsconst.com



"In order to manage \$200+million fast track projects it is critical that all of our team members including subs play an active role not only in construction of the project but also are all active when it comes to safety on the jobsite."

James Holmes, Superintendent



Jobsite Safety Summary Report
For July 2015
UCLA Teachers & Learning Center

R&S Job #: 10164000
Site Workforce: 86-96

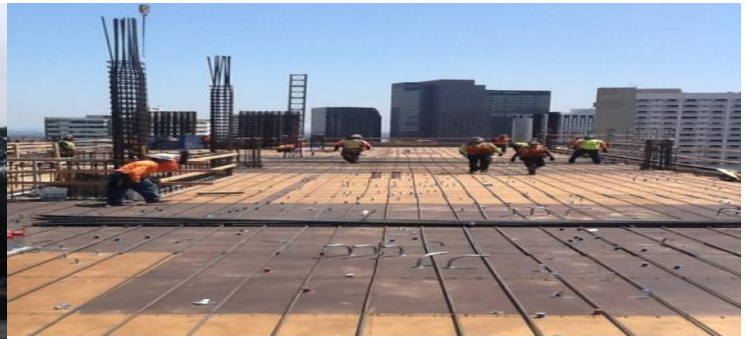
Date of Inspection: July 7, 23, &24.
Inspected by: Jose L. Reyes

516
Days Worked

60
Days Worked Without Injury

0
Lost Time Injuries

5
Doctor Cases



SUCSESSES!

- ◆ Good use of PPE throughout the site to include hard hats, safety glasses, face shields, welding hoods, earplugs, respirators, class two vests/shirts, work boots, gloves, & fall arrest equipment.
- ◆ Great personal fall arrest systems in place & properly in use by Morley when forming their decks/shoring, Shotcrete Systems when erecting/dismantling scaffold, Rebar Engineering when installing reinforced steel on columns/sheer walls, Safe Scaffold when erecting scaffold, Bapko when installing misc. steel, & R&S as needed.
- ◆ Various pre-task meetings have been held with personnel to include concrete placement/pump, fall protection, heat illness prevention, scaffold erection, crane activity, pressurized pipe, welding, & hoisting equipment. Daily crew briefings are conducted on a daily basis by personnel as well as the stretch/flex program by Morley & Shotcrete Systems. Outstanding!
- ◆ Plenty of fresh potable water along with cups & trash receptacles were available in the work areas.
- ◆ Excellent guardrail systems throughout the site to include perimeter & interior along with netting for toeboards.
- ◆ Good safe rigging practices observed by personnel working with the tower crane.





Jobsite Safety Summary Report For July 2015

UCLA Teachers & Learning Center



ISSUES/FINDINGS

- ◆ Debris removal throughout the site needs to improve in certain areas, especially level 3 & B, corrected immediately by the appropriate trades & R&S.
- ◆ Level 1 & 2 had a few guardrails clips installed incorrectly. Also missing a some uprights. All corrected immediately by Morley.
- ◆ A Morley finisher was disciplined for not being 100% tied off when traveling, corrected immediately.

PREPLANNING

- ◆ Exterior framing, roofing upper & lower roof, columns/shear walls level 5, columns reinforcing steel, level 5, exterior colored concrete-steps east/west, formwork, reinforced steel, place & finish concrete. Remove reshoring north wing, shotcrete shear walls, suspended deck upper roof, reinforced boundary jambs, erect scaffold/set wires, complete formwork roof level, safe off for trades, mechanical, electrical, plumbing, inserts, upper roof, & interior framing lower floors along with MEP's.

ADDITIONAL

- ◆ Jobsite safety meetings are held every Tuesday morning at 6:30am, topics include overhead work/crane activity, housekeeping, scaffold safety, & power actuated tools. Ongoing & upcoming activities are also discussed.
- ◆ Adrian Gutierrez & Tim Lynch were recognized for their heroic efforts in performing CPR at the July safety dinners in Redwood City, Roseville, Irvine, & San Diego. Thank you once again!
- ◆ Irvine SLT members/UCLA project team members Carlos DeMelo, James Fabry, Tim Lynch, & Adrian Gutierrez came out with

Report Prepared by:

the monthly safety poster. The topic was AED's.

Jose Reyes

Rudolph and Sletten, Inc.

Regional Safety Coordinator

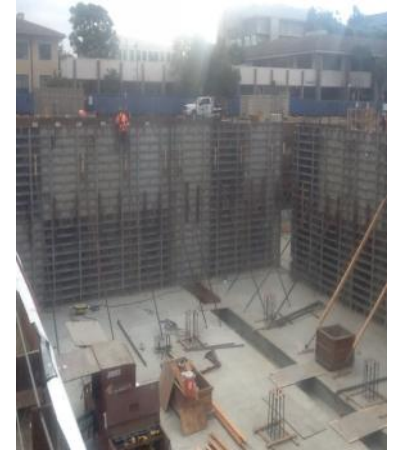
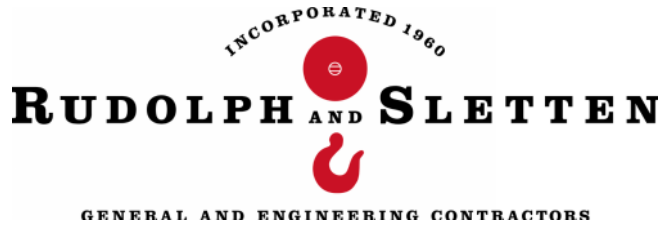
(714) 470-6332

Jose_Reyes@rsconst.com



"Safety continues to be the highest priority on our project. We are raising the standard of all contractors on site"

James Fabry, Senior Project Manager



Jobsite Safety Summary Report
For July 2015
UCSB Bioengineering

R&S Job #: 10280300
Site Workforce: 44-54

Date of Inspection: July 9 & 30.
Inspected by: Jose L. Reyes

160
Days Worked

160
Days Worked Without Injury

0
Lost Time Injuries

0
Doctor Cases



SUCCESSES!

- ◆ Good use of PPE throughout the site to include hard hats, eye protection, ear protection, class two vests /shirts, footwear, hand protection, & fall arrest equipment.
- ◆ Awesome job to Morley, CMC, & Troyer on their personal fall arrest systems especially when tying off 100% when traveling vertically & horizontally.
- ◆ Pre-task meetings have been held for concrete placement, concrete pump, crane activity, heat illness prevention, & torch cutting, welding, & burning.
- ◆ Daily crew briefings are conducted every morning & Morley & CMC are participating in the stretch/flex program, great job!
- ◆ The jobsite looks clean & well managed, especially in paths of access/egress.
- ◆ Rigging was done in accordance with those of safe rigging practices. Good rigging protection on hand & in use for nylon rigging straps.
- ◆ Good job on impalement protection throughout the site on vertical hazards & similar projectiles 6' or less.
- ◆ BMP's to include dust control, stabilized entrance, & perimeter gravel bags looked good.





Jobsite Safety Summary Report For July 2015

UCSB Bioengineering



ISSUES/FINDINGS

- ◆ One employee from Griffen & one carpenter from Morley working without their safety glasses on, both immediately corrected.
- ◆ A Morley carpenter was working off of an "A" frame ladder with one foot & his other foot on the top of a top guardrail. He was corrected immediately & educated on ladder safety.

PREPLANNING

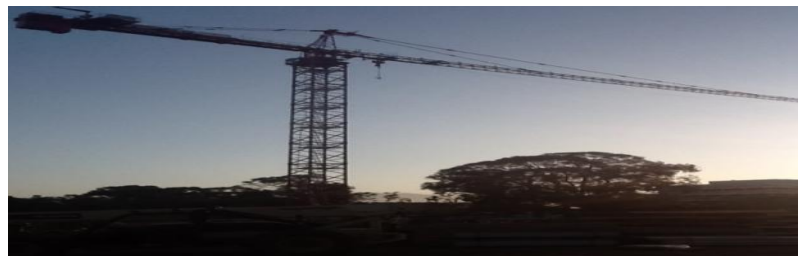
- ◆ Basement columns pour #3, form columns/install rebar, pour columns, strip columns. Area 3, 2 side install wall reinforcement 1 side 3 line, close 3 line wall & install bulkhead, pour wall, strip. Area 6, 1 side pour wall, strip. Area 7, 1 side install bulkhead @ 10 line, close wall, pour wall,. Basement SOG mechanical, electrical, plumbing, slurry backfill @ 18''(615 cy), install 15 mil vapor barrier, install bulkheads & diamond BO's. pour SOG/saw cut. Deck 1, l/o beams & rim joists, form deck, l/o beams & rim joists, control on deck, & form deck.

ADDITIONAL

- ◆ SIP orientation is done every morning, as of July 9th there have been 272 new employees to the site SIP, outstanding!
- ◆ An AED has been on site & posted at the safety office since July 1st, great job team!
- ◆ Jobsite safety meetings are held every Monday morning at 7am, topics covered in July were heat illness prevention, falls from heights, ladder safety, & the do's & don'ts of hard hat safety.
- ◆ An extra first aid kit & litter basket have been posted at the base of the tower crane.

Report Prepared by:

Jose L. Reyes
Rudolph and Sletten, Inc.
Regional Safety Coordinator
(714) 470-6332
Jose_Reyes@rsconst.com



"One of the basics of safety is it's a team effort. Everyone out here is really trying to work together & with each other as a team for safety".

Fred Kolbusz, Jobsite Safety Coordinator