

**Jobsite Safety Summary Report  
For August 2015  
San Diego Central Courthouse**

**R&S Job#:** 1017460  
**Workforce:** 457-475

**Date of Inspection:** 8/3, 12, 17, 20, 22, & 27  
**Inspected by:** Jose L. Reyes

**507**

**Days Worked**

**0**

**Days Worked  
Without Injury**

**0**

**Lost Time  
Injuries**

**12**

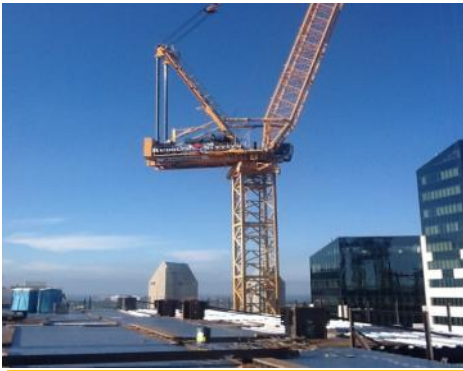
**Doctor Cases**



**SUCCESSES!**

- ◆ Good job on PPE by the 450+ workforce on site to include hard hats, eye protection, hearing protection, respirators, class two vests/T-shirts, foot protection, & hand protection.
- ◆ Throughout the month of August personal fall arrest systems were outstanding! Great job to R&S, Herrick, Morley, UMEC, AGA, Clark Pacific, Anning Johnson, & Surf City Steel.
- ◆ Various pre-tasks were conducted throughout the month of August to include concrete cutting & coring, concrete placement, concrete pump, confined space, crane activity, fall protection, forklift rigging, heat illness, piping pressure testing, & welding, torch cutting & burning.
- ◆ Housekeeping as always looked phenomenal throughout the site, a special mention to our R&S laborers assisting in the housekeeping.
- ◆ Stairways & ramps looked good throughout the site.
- ◆ Guardrails throughout the site to include perimeter & interior guardrails (cable & wood) looked great. Toe board netting & toe board wood are also in place.
- ◆ Rigging looked great throughout the month of August, especially Herrick!





## Jobsite Safety Summary Report For August 2015 San Diego Central Courthouse



### ISSUES/FINDINGS

- ♦ Eye protection is being worn by the 450+ employees on site unfortunately during most visits in August there were a few safety glasses reminders to various workers. All corrected immediately.
- ♦ Pressure pipe pre-tasks were not entirely conveyed or coordinated with our R&S JSC's, corrected immediately.

### PREPLANNING

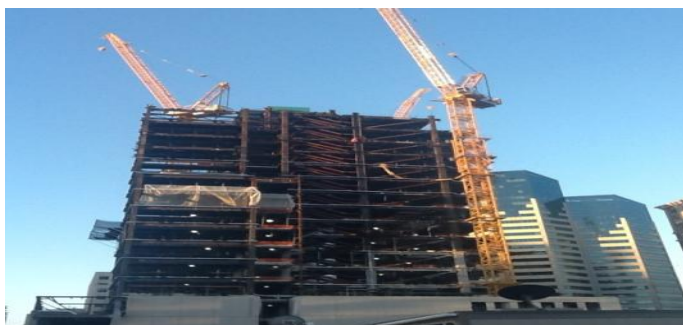
- ♦ SDGE vault structure-CIP decks, main electrical room B2, temporary fire sprinkler stand pipe LVL 12-14, tower crane jumps-tower cranes 1, 2, & 3 LVL's 23 & 25, structural steel-LVL's 19-26, concrete decks-LVL's 14-19, Interiors-stair 2 LVL's B2-10, stair 4 LVL's 3-4, stair 1-LVL's 1-10, stair 3-LVL's 1-4, stair 5-B1-3, stair 6-B1-1, Lower level B2-16 MEP, framing, CMU, & fireproofing, Bldg. exteriors-pre cast panels & exterior curtain wall systems.

### ADDITIONAL

- ♦ Jobsite safety meetings are held every Tuesday mornings at 7am, topics for this month were permits, overhead loads, AED, & danger tape/barricades. SRL training was also provided by Matt Jacquell (Old Republic).
- ♦ Man lifts 1-4 were jumped a total of 6 times in August and the tower cranes 1-3 were jumped a total of 10 times, awesome job!
- ♦ The bridge connection connecting the new building to the existing occurred over a weekend and consisted of 3 sections weighing 61,035 lbs. (center), 55,035 lbs. (south), and 43,035 (north). Tremendous job to all involved in all the pre planning (R&S & Herrick)!

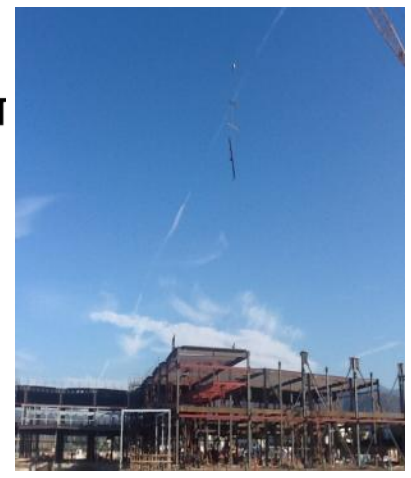
Report Prepared by:

**Jose L. Reyes**  
**Rudolph and Sletten, Inc.**  
**Regional Safety Coordinator**  
**(714) 470-6332**



*"Everyone is working hard to provide a  
safe work place and we are always  
looking to improve"*

*Lee Scott, Sr. Superintendent*



**Jobsite Safety Summary Report  
For August 2015  
Gilead La Verne Greenfields**

**R&S Job #:** 10448600  
**Site Workforce:** 91-102

**Date of Inspection:** Aug. 4, 13, 18, 21, & 26.  
**Inspected by:** Jose L. Reyes

**165**

**Days Worked**

**86**

**Days Worked  
Without Injury**

**0**

**Lost Time  
Injuries**

**1**

**Doctor Cases**



**SUCCESSES!**

- ◆ Personal protective equipment was great throughout the month of August to include hard hats, eye protection, hearing protection, respirators, class two vests/T-shirts, foot protection, & hand protection.
- ◆ Awesome fall arrest systems in place & in use whenever exposed to a fall greater than 6'. Great job especially to our iron worker contractors Herrick, Washing Iron Works, & Anning Johnson.
- ◆ The jobsite looks great when it comes to housekeeping. Paths of travel, exits, & stairs remain clear. Also the exteriors of the buildings remain looking good!
- ◆ Very good job on conducting pre-tasks for the numerous activities to include crane on site, confined space, concrete placement, concrete pump, excavation & trenching, forklift material handling, heat illness & high heat illness prevention, scaffold erection, & welding, torch cutting, & burning pre-tasks.
- ◆ With an average of upper 80's to a high of 101F there was plenty of cool potable water available, along with shade structures. Awesome job teams!







## Jobsite Safety Summary Report For August 2015 Gilead La Verne Greenfields



### ISSUES/FINDINGS

- ◆ Two R&S electrical boxes feeding the new R&S compound trailers did not have their covers completely in place. The boxes were locked out/tagged out & red danger taped off. Then corrected immediately by Conti Electric.
- ◆ Morrow Meadows & R&S were "free rigging" a piece of equipment with a rough terrain forklift & at it's capacity, corrected immediately.

### PREPLANNING

- ◆ SOG bldg. 10, concrete decks bldg. 10, concrete curbs/pads bldg. 10, exterior bldg. 10 LVL 1 & 2 frame fireproofing, LVL 1 interior fireproofing, Bldg. 20 under slab utilities, U/G plumbing SOG bldg. 20, FRP process piping SOG bldg. 20, SOG bldg. 20, concrete decks bldg. 20, elastizell (cellcrete) base slab, concrete curbs/pads bldg. 20, Bldg. 30 vertical structure & structural steel, metal decking bldg. 30, concrete decks bldg. 30, LVL 2 deck, LVL 3 deck, roof deck, Bldg. 50 vertical structure & structural steel, metal decking, Bldg. 51 foundations, U/G electrical SOG, Wheeler off site construction, rough grading, utility connection, & SCE U/G feed off site.

### ADDITIONAL

- ◆ Forklift training was conducted on Tuesday 8/4/15 by Eli Mendoza (Alliant) for 16 R&S personnel, awesome job team!
- ◆ First aid/CPR was conducted on Monday 8/24 by Eli Mendoza (Alliant) for 11 R&S personnel & also a forklift refresher course for two R&S carpenters, again awesome job team!
- ◆ Jobsite safety meetings are held every Monday mornings. The topics for August were fall protection, SWPPP (guest speaker Tyler Schuetz with Sound Earth Strategies), Lock Out/Tag Out (guest speaker Miguel Garcia with Morrow Meadows), & Overhead work (guest speaker Mark Seymour with Herrick).

#### Report Prepared by:

**Jose L. Reyes**

**Rudolph and Sletten, Inc.**

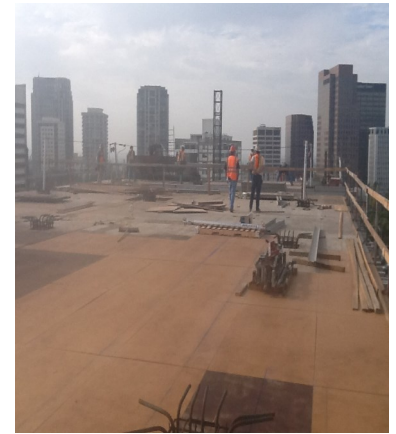
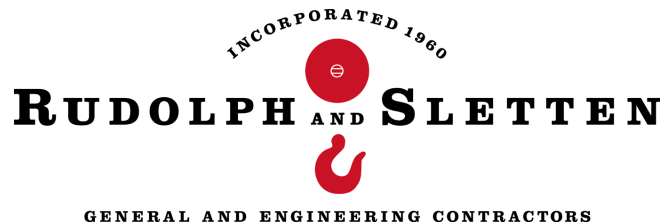
**Regional Safety Coordinator**

**(714) 470-6332**



*"The R&S safety program at Gilead La Verne is a very professional & motivated team. The orientation of new hires, training, & the all hands safety meetings are good"*

*Joe Meyers Sr. Project Manager*



## Jobsite Safety Summary Report For August 2015

### UCLA Teachers & Learning Center

R&S Job# 10164000

Site Workforce: 97-107



Date of Inspection: August 14 & 25.

Inspected by: Jose L. Reyes

**537**

Days Worked

**81**

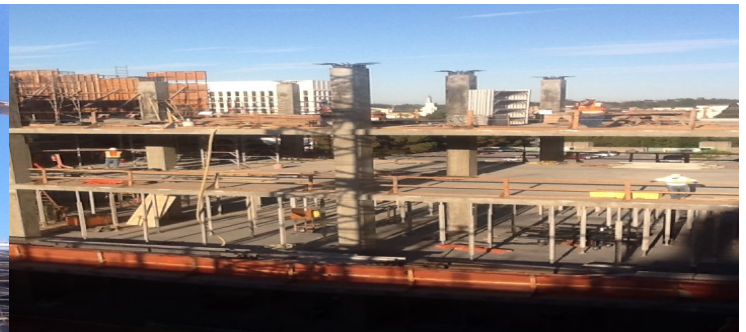
Days Worked  
Without Injury

**0**

Lost Time  
Injuries

**5**

Doctor Cases



## SUCCESSES!

- ♦ Great PPE use throughout the month of August, during my visits there was 100% eye protection!
- ♦ Awesome fall protection throughout the site to include fall arrest systems, guardrails, & floor covers.
- ♦ Pre-tasks conducted throughout the month were welding, torch cutting, & burning, excavation & trenching, heat illness prevention, concrete pump, concrete placement, & concrete cutting & coring.
- ♦ Paths of travel to include walkways, stairs, & exits were very well maintained & clear. Good job on piling & stacking materials, especially on securing materials from displacement!
- ♦ Scaffolds on site especially the perimeter of the building looked great! Awesome job to Safe Scaffold.
- ♦ R&S fire extinguishers are placed throughout the site at 75' in conspicuous areas, adjacent to stairways, & current on their monthly inspections. Good job team!
- ♦ Emergency exits signage are placed at every level along with the floor level, way go team!
- ♦ Plenty of cool potable water along with drinking cups & shade near the work areas.
- ♦ Stairways & stair towers looked good throughout the jobsite.



**Jobsite Safety Summary Report**  
**For August 2015**  
**UCLA Teachers & Learning Center**



**ISSUES/FINDINGS**

- ♦ A Safe Scaffold erector was observed not 100% tied off as he was wearing a single lanyard, corrected immediately.
- ♦ Best roofing did not have sufficient or fresh water for their crew at the start of their shift, corrected immediately.

**PREPLANNING**

- ♦ Colored concrete steps east/west, LVL 2-reshore under LVL 2 removals, LVL 3-reshore under 3 removals, Parapet Walls-reshore under LVL 4 removals, cure/stripping upper roof LVL, elevator penthouse walls & deck, parapet walls/mech.curbs, Concrete stairs-stair 1-LVL 4-5, Stair 2-LVL 3-4, Stair 4-LVL B-A, Exterior envelope-curtain wall system south wing, East wing-east wing partial, exterior wall framing east wing, sheathing/waterproofing east wing, North wing-exterior wall framing north wing, & sheathing/waterproofing north .

**ADDITIONAL**

- ♦ Daily crew briefings are conducted every morning by the workforce prior to starting the day's activities. Good job!
- ♦ The stretch & flex program is also being performed on a daily basis prior to commencing work, great job to R&S & Morley.
- ♦ Weekly safety meeting are held every Tuesday morning at 6:30am. Topics for the month of August were ladder safety, aerial boom lifts, pressure pipe/energized electrical (great job Jimmy Fabry!), & overhead hoisting.

**Report Prepared by:**

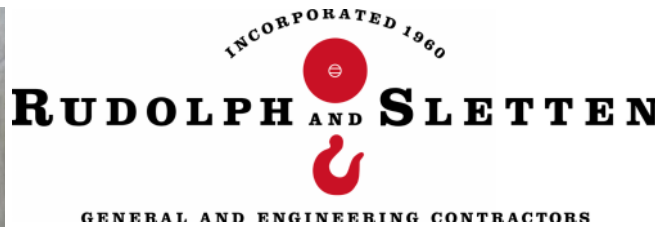
**Jose L. Reyes**  
**Rudolph and Sletten, Inc.**  
**Regional Safety Coordinator, Irvine**  
**(714) 470-6332**



*"Safety is a way of life for us. Number 1 thing in the morning & at the end of the day when we head home. Our planning & how we run the job all revolves around safety."*

*Tim Lynch, Superintendent*





## Jobsite Safety Summary Report For August 2015

### UCSB Bioengineering

**R&S Job #:** 10280309

**Site Workforce:** 45-55

**Date of Inspection:** August 19 & 31st.

**Inspected by:** Jose L. Reyes

**186**

Days Worked

**186**

Days Worked  
Without Injury

**0**

Lost Time  
Injuries

**0**

Doctor Cases



### SUCCESSES!

- ♦ Great job on PPE to include hard hats, safety glasses, hearing protection, class two vests/T-shirts, foot protection, & hand protection!
- ♦ Observed very good safe practices with 100% tie off whenever exposed to a fall greater than 6' to include traveling vertically or horizontally. Nice job to CMC & Morley.
- ♦ Various pre-tasks were conducted in the month of August to include welding, torch cutting, & burning, concrete pump, & concrete placement.
- ♦ Materials rigged with the tower crane were done in accordance with safe rigging practices, good job team!
- ♦ Very good impalement protection throughout the site, all vertical rebar or similar projectiles were properly protected.
- ♦ Great job on signage leading up to the jobsite on campus & perimeter fencing. Public protection & protection of the students/faculty is very well maintained with coordination of deliveries.





## Jobsite Safety Summary Report For August 2015 UCSB Bioengineering



### ISSUES/FINDINGS

- ♦ Access/egress around the site & especially the stair tower/access ladder were good. We needed improvement in maintaining walkways/path of travel clear at all times, corrected immediately.
- ♦ The secondary access was removed during stripping operations by Morley, corrected immediately.

### PREPLANNING

- ♦ Basement SOG-SOG #2– mechanical, electrical, plumbing, slurry backfill @ 18", install 15 mil vapor barrier, install 2" sand, install bulkheads & diamond bo's, install rebar, pour SOG/saw cut slab, First level-area #1, deck #1, L/O @ beams & RIM joist, L/O @ beams & RIM joist, form deck, control on deck, form deck, mechanical/install blockouts, electrical/install blockouts, plumbing/install blockouts, form deck, control on deck, install edge form, install rebar-bottom matt, install bulkhead, in slab electrical-west half, install rebar bottom matt west, SW area , auditorium walls, area #2, & deck #2.

### ADDITIONAL

- ♦ Jobsite safety meetings are held every Monday morning at 7am, this month's topic's were pinch points and tie-off, common causes of accidents, back to school/back to work, & housekeeping.
- ♦ SIP orientation is conducted every morning at 7am with all new employees to the site.
- ♦ The stretch and flex program is being performed every morning prior to the start of work by Morley & R&S, great job team!

### Report Prepared by:

**Jose L. Reyes**  
**Rudolph and Sletten, Inc.**  
**Regional Safety Coordinator**



*"Safety has been really good , Morley has done a very good job on their fall protection. Overall all our subs have done a really good job on safety, Cal/Ex with their excavations & Helix with their electrical."*

*Garry Stem, Superintendent*